

abbotts

Lisa Richardson



## SIZE

To fit bust

81-97	97-117	117-127	cm
32-38	38-46	46-50	in

Actual bust measurement of garment

114	132	150	cm
45	52	59	in

## YARN

### Alpaca Classic

A Snowflake White 115

5 6 6 x 25gm

B Feather Grey Mélange 101

5 6 6 x 25gm

C Charcoal Mélange 102

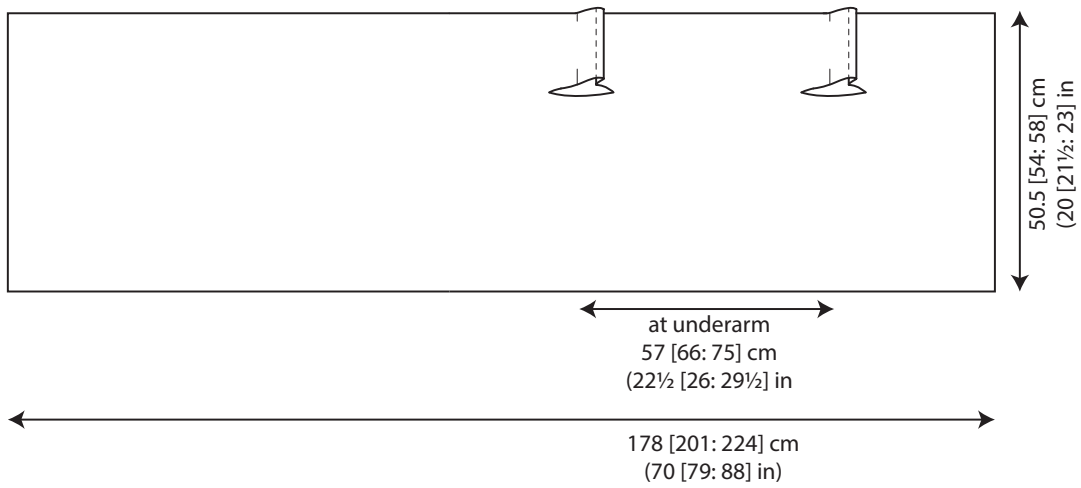
4 4 5 x 25gm

## NEEDLES

1 pair 3¾mm (no 9) (US 5) needles

## TENSION

24 sts and 40 rows to 10 cm measured over moss st using 3¾mm (US 5) needles.





# beacon

Lisa Richardson



## SIZE

To fit bust

81-86	91-97	102-107	112-117	122-127	cm
32-34	36-38	40-42	44-46	48-50	in

Actual bust measurement of garment

90	101	110	120	130	cm
35½	40	43½	47	51	in

## YARN

**Alpaca Classic**

13	14	16	18	20	x 25gm
----	----	----	----	----	--------

(photographed in Soft Satin 116)

## NEEDLES

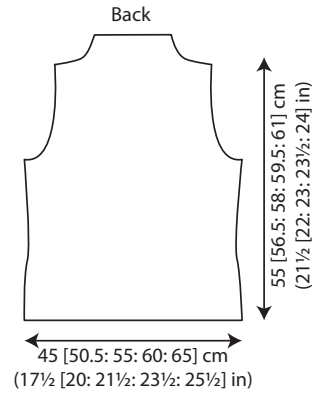
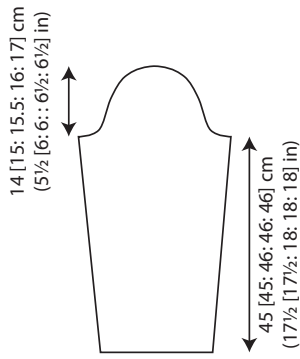
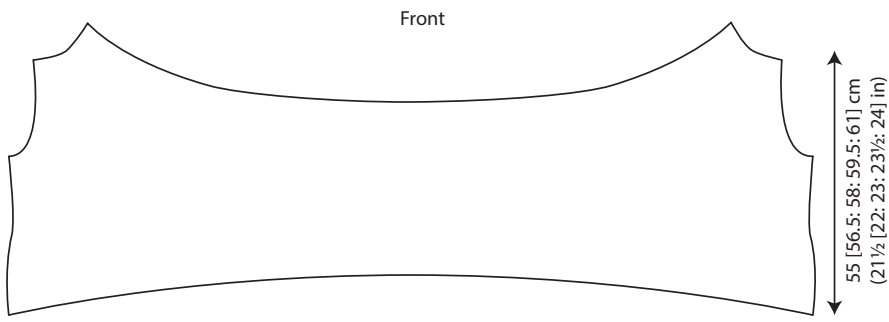
1 pair 3¼mm (no 10) (US 3) needles

1 pair 3¾mm (no 9) (US 5) needles

## TENSION

23 sts and 31 rows to 10 cm measured over st st using 3¾mm (US 5) needles.







# butlers

Lisa Richardson



## SIZE

One size, to fit average size womans hand

## Alpaca Classic

1 x 25gm

(photographed in Dark Burgundy 122)

## NEEDLES

Set of 4 double-pointed 3¾mm (no 9) (US 5) needles

Cable needle

## TENSION

30 sts and 33 rounds to 10 cm measured over patt using 3¾mm (US 5) needles.

fo w b e r r y

Lisa Richardson



## SIZE

To fit bust

81-86	91-97	102-107	112-117	122-127	cm
32-34	36-38	40-42	44-46	48-50	in

Actual bust measurement of garment

112	121	131	141	150	cm
44	47½	51½	55½	59	in

## YARN

### Alpaca Classic

A Purple Rain 123					
5	5	6	6	7	x 25gm
B Golden Girl 114					
1	1	1	1	1	x 25gm
C Verdigris 108					
2	2	2	2	2	x 25gm
D Dahlia 121					
1	1	1	1	1	x 25gm
E Copper Clay 119					
2	2	2	2	3	x 25gm
F Soft Satin 116					
1	1	1	1	1	x 25gm
G Pink Lips 124					
1	2	2	2	2	x 25gm
H Peacock 107					
1	1	1	1	1	x 25gm
I Willow 112					
1	1	2	2	2	x 25gm
J Deep Teal 109					
1	1	1	1	1	x 25gm

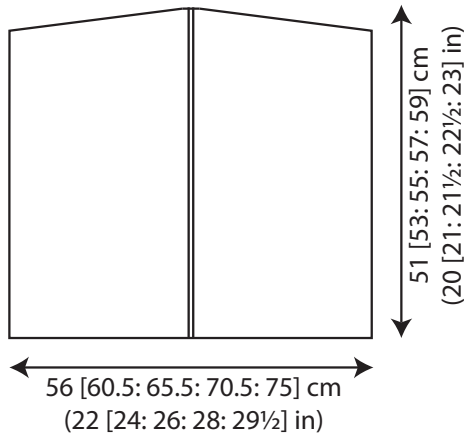
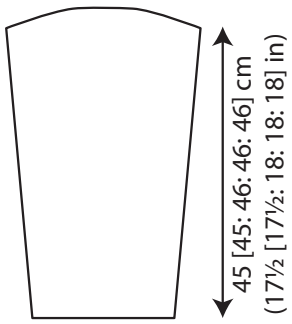
## NEEDLES

1 pair 3¾mm (no 10) (US 3) needles  
1 pair 3¾mm (no 9) (US 5) needles

## TENSION

33 sts and 46 rows to 10 cm measured over patt, 23 sts and 31 rows to 10 cm measured over st st, both using 3¾mm (US 5) needles.





# hewsting

Lisa Richardson



## SIZE

To fit bust

81-86	91-97	102-107	112-117	122-127	cm
32-34	36-38	40-42	44-46	48-50	in

Actual bust measurement of garment

92	103	111	122	132	cm
36	40½	43½	48	52	in

## YARN

Alpaca Classic

10	11	12	13	14	x 25gm
----	----	----	----	----	--------

(photographed in Soft Satin 116)

## NEEDLES

1 pair 3¾mm (no 9) (US 5) needles

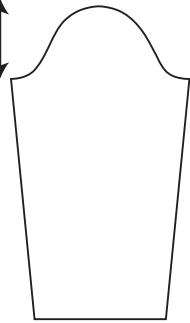
Cable needle

## TENSION

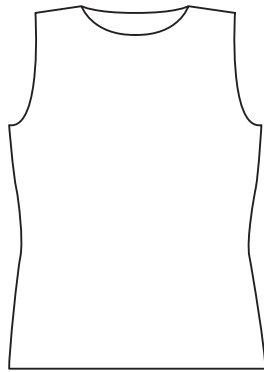
23 sts and 31 rows to 10 cm measured over st st, 30 sts and 33 rows to 10 cm measured over cable patt, both using 3¾mm (US 5) needles.



15 [15.5: 16: 17: 17.5] cm  
(6 [6: 6: 6½: 7] in)



45 [45: 46: 46: 46] cm  
(17½ [17½: 18: 18: 18] in)



68 [70: 72: 74: 76] cm  
(27 [27½: 28½: 29: 30] in)

46 [51.5: 55.5: 61: 66] cm  
(18 [20½: 22: 24: 26] in)

houghton

Lisa Richardson

**YARN**

Alpaca Classic

9 x 25gm

(photographed in Sun Valley 113)

**NEEDLES**

1 pair 5½mm (no 5) (US 9) needles

**TENSION**

16½ sts and 21 rows to 10 cm measured over patt using 5½mm (US 9) needles and yarn DOUBLE.

**FINISHED SIZE**

Completed scarf is 22 cm (8½ in) wide and meas 166 cm (65½ in) all round.





# marshwood

Lisa Richardson



## SIZE

To fit bust

81-86	91-97	102-107	112-117	122-127	cm
32-34	36-38	40-42	44-46	48-50	in

Actual bust measurement of garment

90	101	110	121	130	cm
35½	40	43½	47½	51	in

## YARN

### Alpaca Classic

A Green Moss 111

6	6	7	7	8	x 25gm
---	---	---	---	---	--------

B Dark Burgundy 122

4	5	5	5	6	x 25gm
---	---	---	---	---	--------

C Vermillion 120

1	1	1	1	1	x 25gm
---	---	---	---	---	--------

D Sierra Mélange 117

1	1	2	2	2	x 25gm
---	---	---	---	---	--------

E Peacock 107

1	1	1	1	1	x 25gm
---	---	---	---	---	--------

## NEEDLES

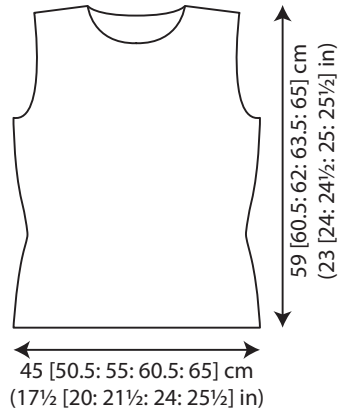
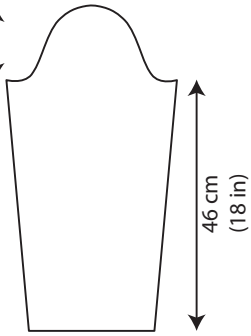
1 pair 3¼mm (no 10) (US 3) needles

1 pair 3¾mm (no 9) (US 5) needles

## TENSION

26 sts and 28 rows to 10 cm measured over patterned st st using 3¾mm (US 5) needles.

13.5 [14.5; 15; 15.5; 16.5] cm  
(5½ [5½; 6; 6½] in)



m a y f i e l d

Lisa Richardson



#### YARN

##### Alpaca Classic

A Snowflake White 115

5 x 25gm

B Soft Satin 116

5 x 25gm

C Sierra Mélange 117

6 x 25gm

#### NEEDLES

1 pair 3¾mm (no 9) (US 5) needles

#### TENSION

33 sts and 46 rows to 10 cm measured over patt using 3¾mm (US 5) needles.

#### FINISHED SIZE

Completed wrap is 46 cm (18 in) wide and 190 cm (75 in) long.



penwybridge

Lisa Richardson



#### SIZE

To fit bust

81-86	91-97	102-107	112-117	122-127	cm
32-34	36-38	40-42	44-46	48-50	in

Actual bust measurement of garment

97	108	117	128	137	cm
38	42½	46	50½	54	in

#### YARN

Alpaca Classic

12	13	14	15	17	x 25gm
----	----	----	----	----	--------

(photographed in Charcoal Mélangé 102)

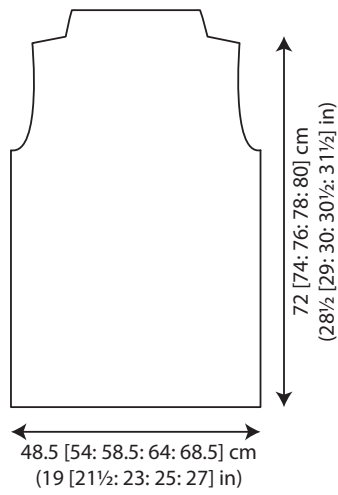
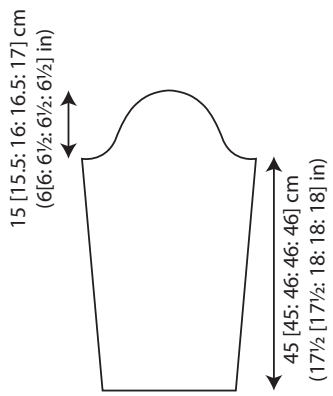
#### NEEDLES

1 pair 3¾mm (no 9) (US 5) needles

Cable needle

#### TENSION

22 sts and 39 rows to 10 cm measured over g st using 3¾mm (US 5) needles. Cable panel (36 sts) measures 7.5 cm.



po ph am

Lisa Richardson



#### SIZE

To fit bust

81-86	91-97	102-107	112-117	122-127	cm
32-34	36-38	40-42	44-46	48-50	in

Actual bust measurement of garment

87	97	108	118	128	cm
34½	38	42½	46½	50½	in

#### YARN

Alpaca Classic

8	9	10	11	12	x 25gm
---	---	----	----	----	--------

(photographed in Berry Sorbet 125)

#### NEEDLES

1 pair 3¾mm (no 9) (US 5) needles

3¼mm (no 10) (US 3) circular needle no more than

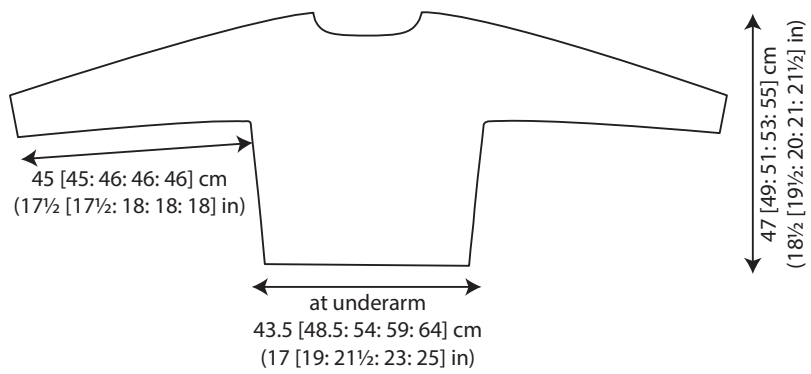
40 cm long

Cable needle

#### TENSION

22 sts and 39 rows to 10 cm measured over g st using 3¾mm (US 5) needles. Cable panel (36 sts) measures 7.5 cm.





# teesdale

Lisa Richardson



## YARN

### Alpaca Classic

A Charcoal Mélange 102

3 x 25gm

B Snowflake White 115

4 x 25gm

C Soft Satin 116

3 x 25gm

D Feather Grey Mélange 101

2 x 25gm

E Noir 103

1 x 25gm

## NEEDLES

1 pair 3¾mm (no 10) (US 3) needles

1 pair 3¾mm (no 9) (US 5) needles

## TENSION

26 sts and 28 rows to 10 cm measured over patterned st st using 3¾mm (US 5) needles.

## FINISHED SIZE

Completed scarf is 22 cm (8½ in) wide and 191 cm (75 in) long.



# woodbine

Lisa Richardson



## YARN

### Alpaca Classic

A Verdigris 108

2 x 25gm

B Pink Lips 124

2 x 25gm

C Golden Girl 114

2 x 25gm

## NEEDLES

1 pair 3¾mm (no 9) (US 5) needles

## TENSION

24 sts and 40 rows to 10 cm measured over moss st using 3¾mm (US 5) needles.

## FINISHED SIZE

Completed scarf is 19 cm (7½ in) wide and 200 cm (78½ in) long.

# lightfoot

Lisa Richardson



## SIZE

To fit bust

81-86	91-97	102-107	112-117	122-127	cm
32-34	36-38	40-42	44-46	48-50	in

Actual bust measurement of garment

113	122	132	142	152	cm
44½	48	52	56	60	in

## YARN

Alpaca Classic

27	30	33	35	38	x 25gm
----	----	----	----	----	--------

(photographed in Feather Grey Mélange 101)

## NEEDLES

1 pair 5mm (no 6) (US 8) needles

1 pair 5½mm (no 5) (US 9) needles

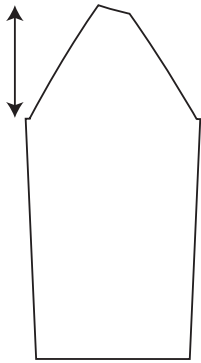
**BUTTONS** – 9 x 9427230100 (metal shank button) from Groves and Banks. Please see information page for contact details.

## TENSION

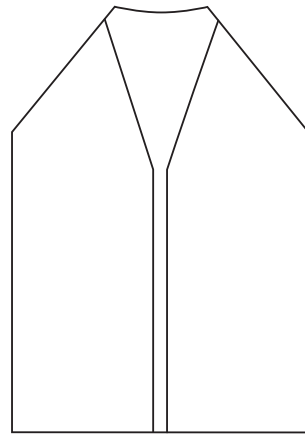
16½ sts and 21 rows to 10 cm measured over patt using 5½mm (US 9) needles and yarn **DOUBLE**.



21 [23: 24: 25.5: 26.5] cm  
(8½ [9: 9½: 10: 10½] in)



43 [43: 44: 44: 44] cm  
(17 [17: 17½: 17½: 17½] in)



56.5 [61: 66: 71: 76] cm  
(22 [24: 26: 28: 30] in)

length less top of sleeve  
81 [83: 85: 86.5: 87.5] cm  
(32 [32½: 33½: 34: 34½] in)



order code: **ZB288**

